

Technical Data

Type and Number of Contacts		1/3 C 30	1/2 B 32 1/2 Q 32	1/2 C 48 1/2 R 48	
Insertion and Withdrawal Force lbs. (N)		6.7 (30)	6.7 (30)	10.1 (45)	
Current Carrying Capacity		See Diagram			
	Contact Chassis	K	0.07 (1.8 mm)		
		L	0.06 (1.6 mm)		
Creepage (K) and Clearance (L) Distance* in (mm)		K	0.05 (1.2 mm)		
	Contact/Contact	L	0.05 (1.2 mm)		
Test VoltageU			1000 V		
Contact Resistance			≤20 mΩ		
Insulation Resistance			10 mΩ		
Temperature Range			- 55...+ 125 °C		
Contact Material	Header		CuZn		
	Socket		CuSn		
Housings			Glass Filled Polyester		
Flammability acc. to UL 94			V - 0		
Comparative Tracking Index acc. to IEC 223 DIN VDE 0303 TI. 1			CTI 150		

* With Special Contacts

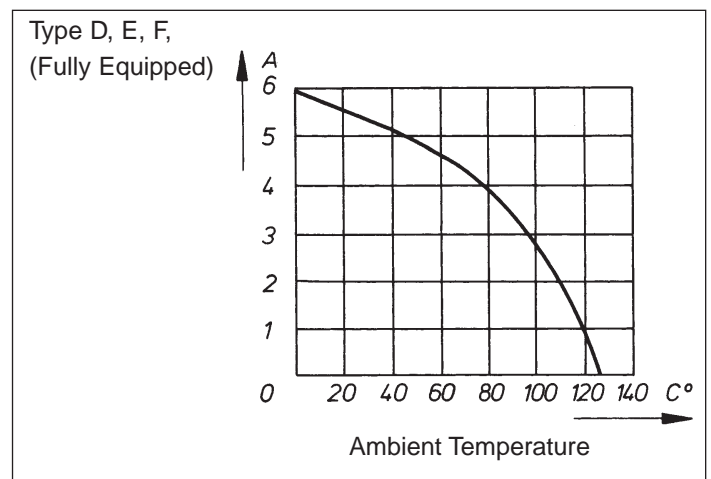
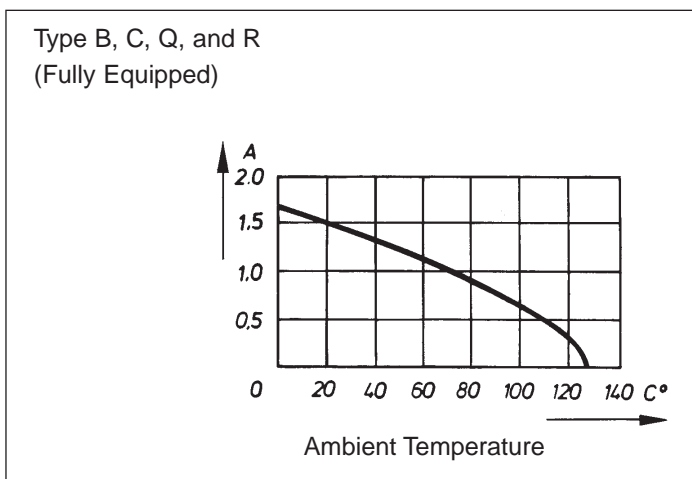
DIN 41612 Part 5 Mating Cycles		
Performance Level	1**	Min. 500 Mating Cycles
Performance level	2	Min. 400 Mating Cycles
Performance Level	3	Min. 50 Mating Cycles

** ON REQUEST

Technical Data

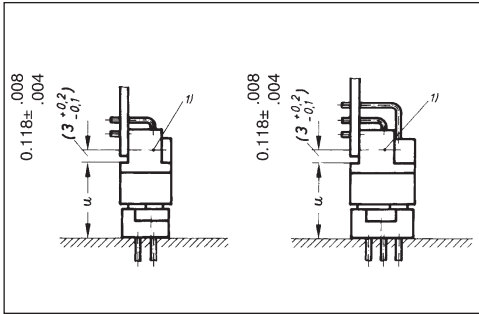
B 64 Q 64	C 32 R 32	C 64 R 64	C 96	C+1 128	M 24	M 42	M 60	M 78	D 32	E 48	F 32	F 48
13.5 (60)	6.7 (30)	13.5 (60)	20.2 (90)	27.0 (120)	5.2 (23) *22.5 (100)	9.0 (40) *22.5 (100)	12.8 (57) *22.5 (100)	16.6 (74) *22.5 (100)	9.0 (40)	13.5 (60)	11.2 (50)	16.9 (75)
See Diagram Page _____												
0.07 (1.8 mm)										0.24 (6.0 mm)		
0.06 (1.6 mm)										0.14 (3.5 mm)		
0.05 (1.2 mm)	0.12 (3.0 mm)	0.05 (1.2 mm)							0.12 (3.0 mm)			
0.05 (1.2 mm)	0.12 (3.0 mm)	0.05 (1.2 mm)							0.06 (1.6 mm)			
1000 V	1550 V	1000V							1550 V			
20 mΩ										15mΩ		
10 ¹² Ω												
-55...+125°C												
CuZn												
CuSn												
Glass Filled Polyester										PBTP 30% GV		
V-0												
CTI 150										CTI 175	CTI 550	

Operating current per contact related to ambient temperature:



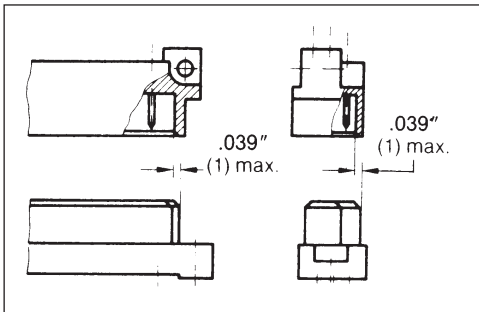
Technical Data

Mating Conditions



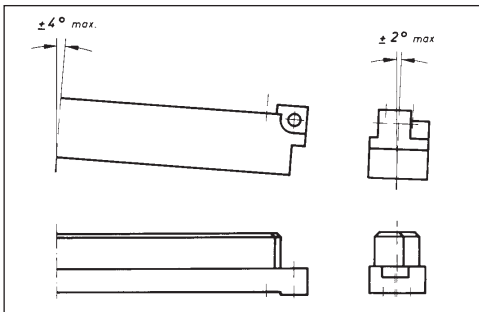
Mating Direction

Positive contact at $u = 0.49$ (12.4) ... 0.56 (14.2 mm.)
 1) Mounting hole centre line



Longitudinal and Transverse Misalignment

A longitudinal or transverse misalignment of 0.039 " (1 mm) can be compensated for by float mounting either the male or female connector.



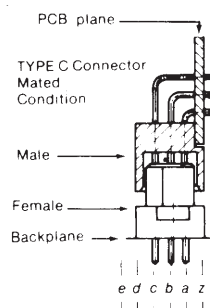
Angular Misalignment

An angular misalignment of $\pm 4^\circ$ in longitudinal axis and $\pm 2^\circ$ in transverse axis can be compensated for by float mounting either the male or female connector.

International [DIN/IEC] .100" (2.54 mm) Grid Standard

Row centerlines are identified on the transverse axis by lower case letters, "z" being the PCB mounting plane.

Contact centerlines on the longitudinal axis are identified by numerals from 1 through 32.

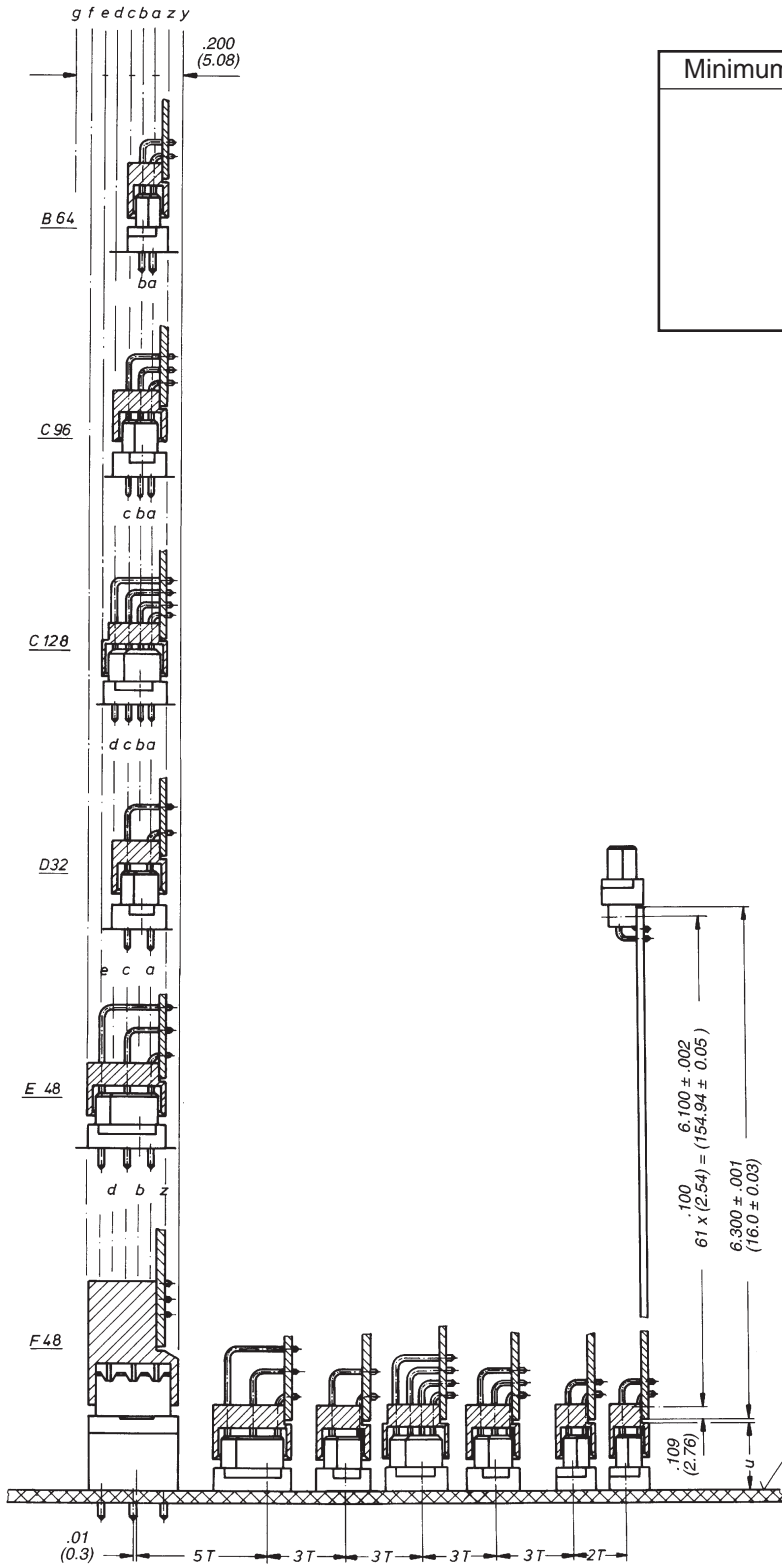


In this catalog equipped positions of connectors are described as follows:
 $a + c/\text{even} =$ rows a and c equipped at even number contact positions;
 $a/32 =$ contact located in position number 32 of row a.

TYPE C Connector	
1	a
2	a
3	b
4	b
5	c
6	c
7	d
8	d
9	e
10	e
11	a
12	a
13	b
14	b
15	c
16	c
17	d
18	d
19	e
20	e
21	a
22	a
23	b
24	b
25	c
26	c
27	d
28	d
29	e
30	e
31	a
32	a

Technical Data

Spacing Between the Rows
According to DIN 41612 —
2.54 mm (1/10")



Minimum Distance To Adjoining Female Connector	
Type	B - B = 2 T
	B - C = 3 T
	C - D = 3 T
	D - C + 1 = 3 T
	C + 1 - E = 3 T

u = 0.49 (12.4) — 0.56 (14.2 mm)
T = .200 (5.08 mm) 2 x .100 (2 x 2.54 mm)